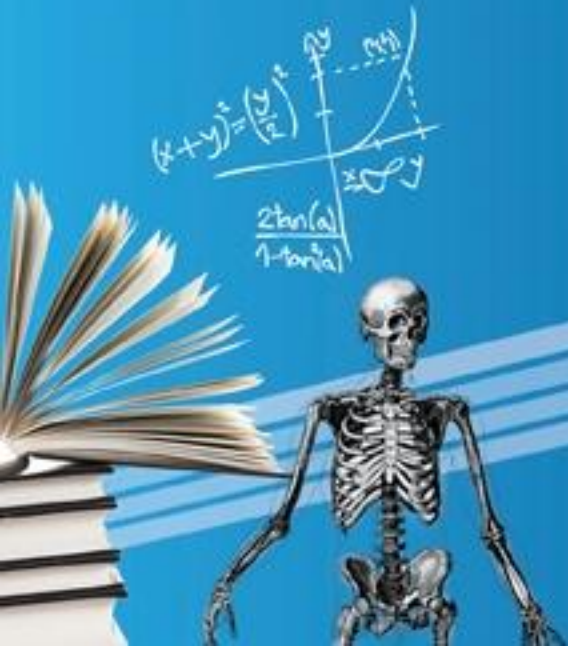




Godalming
College

A successful modern learning community



sixth form colleges

defining...sixth form colleges

A chance to start afresh in a more adult environment

Specialist 16-19 institutions

A good stepping stone to university and work

Average size is around 1400 students



High level of performance

A much wider range of courses than in schools or FE colleges

Godalming College...

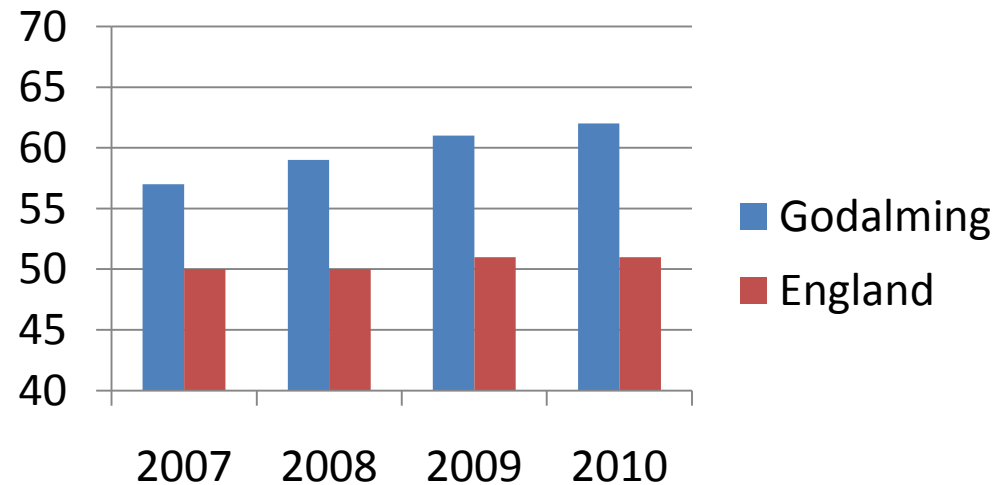
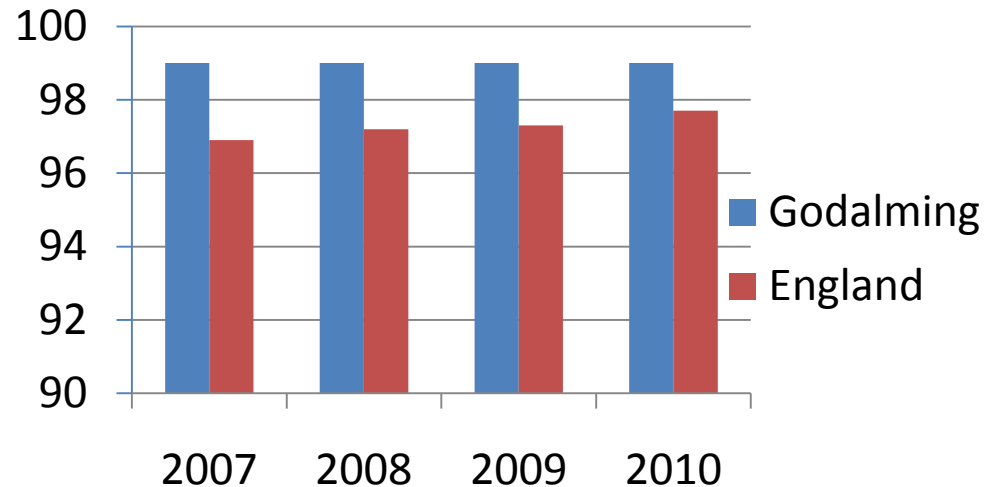
A successful
modern learning
community

successful

successful...A level & BTEC results

- 99% pass rate
- 62% A-B grade

- High value-added
- Good level 2 results



successful...going to university

- 85% of students go on to HE or FE
- In last Ofsted inspection - Outstanding



modern

modern...new facilities

- New independent learning centre: library and computer facilities, careers suite, study centre.
- New sports hall with fitness suite, dance studio.
- New performing arts centre with new studios, practice and rehearsal rooms,
- Refurbished Maths, Science, Art areas

modern...new facilities



modern...information technology

- First class IT facilities
- Over 1000 PCs
- Excellent student intranet –
Godalming Online
- Full wifi network



learning

learning...lots of subjects

- 40+ AS Level Subjects
- 40+A level Subjects
- 5 BTEC Nationals
- 4 BTEC Extended Certificates
- 5 GCSE Subjects
- Child Care courses

learning...an all-round education

- Sport, drama, music
- Lots of other extra curricular activities
- Many opportunities for trips and visits
- *Shaping Futures* programme: study skills, life skills, citizenship

learning...the SFBac Award



- ❑ The SFBac is a national award which will recognise the full extent of your learning and personal development
- ❑ It emphasises that developing skills and values is as important as subject knowledge.
- ❑ It will add value to your applications to higher education or employment
- ❑ It will provide you with a SFBac Testimonial Certificate

community

community...togetherness

- Lots happening
- Sense of togetherness
- Friendly and lively atmosphere
- Space and freedom to develop as an independent individual
- A 'junior' university



community..safe, secure, supportive

- Strong values, clear rules
- Comprehensive student guidance system – tutor groups, careers
- A firm but fair system of discipline

Info on admissions

- We are an open access college, we do not select by ability
- For all open applicants places at the College will be decided by geographical proximity not first-come-first-served
- The first closing date for applications will be September 30th and all applications must be submitted by post
- Applicants from Federation schools are guaranteed a place – Broadwater, Glebelands, Rodborough and Woolmer Hill

Info on admissions continued

- In the past we have been over-subscribed with applications and we expect to be closed by September 30th
- Applications within a 12 mile radius pretty much guaranteed a place – Woking, Farnham, Haslemere etc
- Applicants living up to 20 miles should apply – there is a reasonable chance of success
- We will accept over 1000 applications although only about 50% of you will actually enrol

A successful
modern learning
community