

GODALMING

COLLEGE

LEARNING TOGETHER

Prospectus
2026
www.godalming.ac.uk

OPEN

EVENINGS

→ **YEAR 10**
WEDNESDAY 9TH JULY

→ **YEAR 11**
THURSDAY 25TH SEPTEMBER

**BOOKING
ESSENTIAL**



Submitting Your Application

Complete your online application form at www.godalming.ac.uk. Applications for **September 2026** should be submitted between **9th July** and **midday on 20th October 2025**. Please ensure that you apply by the deadline as we will be unable to accept applications after this time. Where the College receives more applications than it has spaces, the oversubscription procedure will apply, as outlined in the Admissions Policy. We look forward to receiving your application.

CONTENTS

Welcome from the Principal	2
Welcome from the Student Union	3
Why choose Godalming College?	4
Your Advanced Study Programme	6
Choosing your Study Programme	8
Courses	10
+Enrichment	14
+Explore	16
+Active Sports	18
+Active The Arts	20
+Active DofE and eSports	23
+Qualifications	24
Student-led Clubs and Societies	26
Support for Learning	28
Support for Wellbeing	32
Support for Progression	34
Student Progression	36
Outstanding Resources	38
Bringing Learning to Life	40
Travelling to College	42
The Application Year	44

📷 [instagram.com/godalmingcollege](https://www.instagram.com/godalmingcollege)

📘 [facebook.com/godalmingcollege](https://www.facebook.com/godalmingcollege)

🌐 [@godalming-college](https://www.linkedin.com/company/godalming-college)

📺 [youtube.com/c/GodalmingAcUkCollege](https://www.youtube.com/c/GodalmingAcUkCollege)



WELCOME TO GODALMING COLLEGE



It is an exciting, vibrant environment in which to be a student, at what is one of the most crucial stages of a young person's education.

Emma Young
Principal



Welcome from the Principal

Godalming College is a very welcoming and inspiring community focused on learning. Teachers and students work in partnership to enable student success. In November 2024, the College retained its Ofsted 'Outstanding' status. The inspection report states "Students value the very positive and welcoming community at Godalming College. They benefit from highly knowledgeable teachers who create calm, orderly environments that allow them to focus on their learning exceptionally well." We are always keen to get feedback from our students and were delighted that in the last student survey, 97% of students stated that they would recommend Godalming College. We are specialists in sixth form education and pride ourselves on the wide range of course choices we offer, both academic and vocational. It isn't just about courses though; at College, students take part in a wonderful range of enrichment activities too. We have a very well-resourced campus with state-of-the-art facilities that our students gain experience from and enjoy every day.

The College is an excellent stepping-stone between school and university, an apprenticeship or employment. We want all our students to enjoy their time here. It is an exciting, vibrant environment in which to be a student, at what is one of the most crucial stages of a young person's education. We have high aspirations for all our students and work hard to ensure they leave equipped with new skills and approaches to learning that will benefit them throughout their lives.

We hope you want to come and discover more at one of our Open Evenings and we look forward to welcoming you to the College.



WELCOME FROM THE STUDENT UNION

Sixth Form College is an incredible and unique experience – you're here for just two years, but those two years serve as a powerful bridge between school, higher education and the working world. I'm truly honoured to have been elected as the Student Union President, and the best part of this role is watching our cohort develop into a tightly-knit community, where we support, inspire, and uplift each other every step of the way.

Godalming isn't just a place to study; it's a vibrant environment that encourages personal growth and intellectual curiosity. With endless resources and a passionate, dedicated staff, you'll find everything you need to succeed and truly flourish.

Starting college can feel overwhelming, but remember, you're not doing it alone. You're surrounded by like-minded peers, and the Student Union is always here to offer support along the way. I sincerely hope you'll find your place in our amazing community here at Godalming College and make the most of every opportunity that comes your way.



On behalf of the Student Union, I would like to welcome you to Godalming College.



Attiya Tul-Mateen,
President of The
Student Union

WHY CHOOSE

GODALMING COLLEGE?



JOIN A SUCCESSFUL VIBRANT LEARNING COMMUNITY



Taught by
experts who
specialise
in sixth form
education



Feel supported
by our highly
committed staff



Choose from a
wide range of
courses and
study them in
any combination



Enjoy our
excellent
facilities and
resources



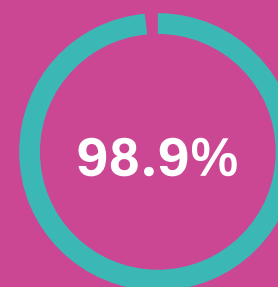
Develop your knowledge,
skills and confidence
with our unique
+Enrichment programme



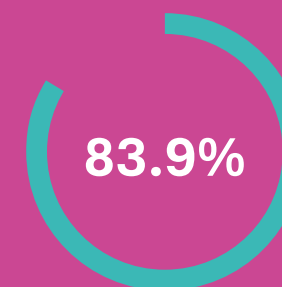
Benefit from expert
progression advice
and guidance

OUTSTANDING RESULTS

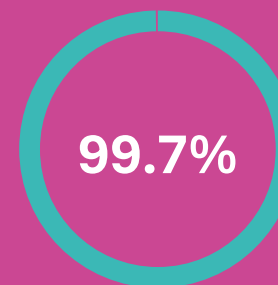
2024 results



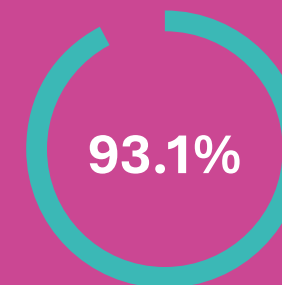
A level pass rate



A* - C Grade



BTEC Level 3 pass rate



Distinction* - Merit



YOUR ADVANCED STUDY PROGRAMME

Your Advanced Study Programme will typically consist of 3 core subjects...

...either A Levels, BTECs or a mixture of both. A Levels are predominantly assessed by exams at the end of the two year course. However, BTECs are more modular and mostly coursework based.

Our Entry Requirements

To qualify you need to achieve a minimum of 5 GCSEs at Grade 4 or above. Some subjects have additional entry requirements. Please see pages 10-13 for further details.

A lack of GCSE English Language at Grade 4 or above will significantly restrict Study Programme options.



STUDENT FOCUS

BRONWEN PRICE

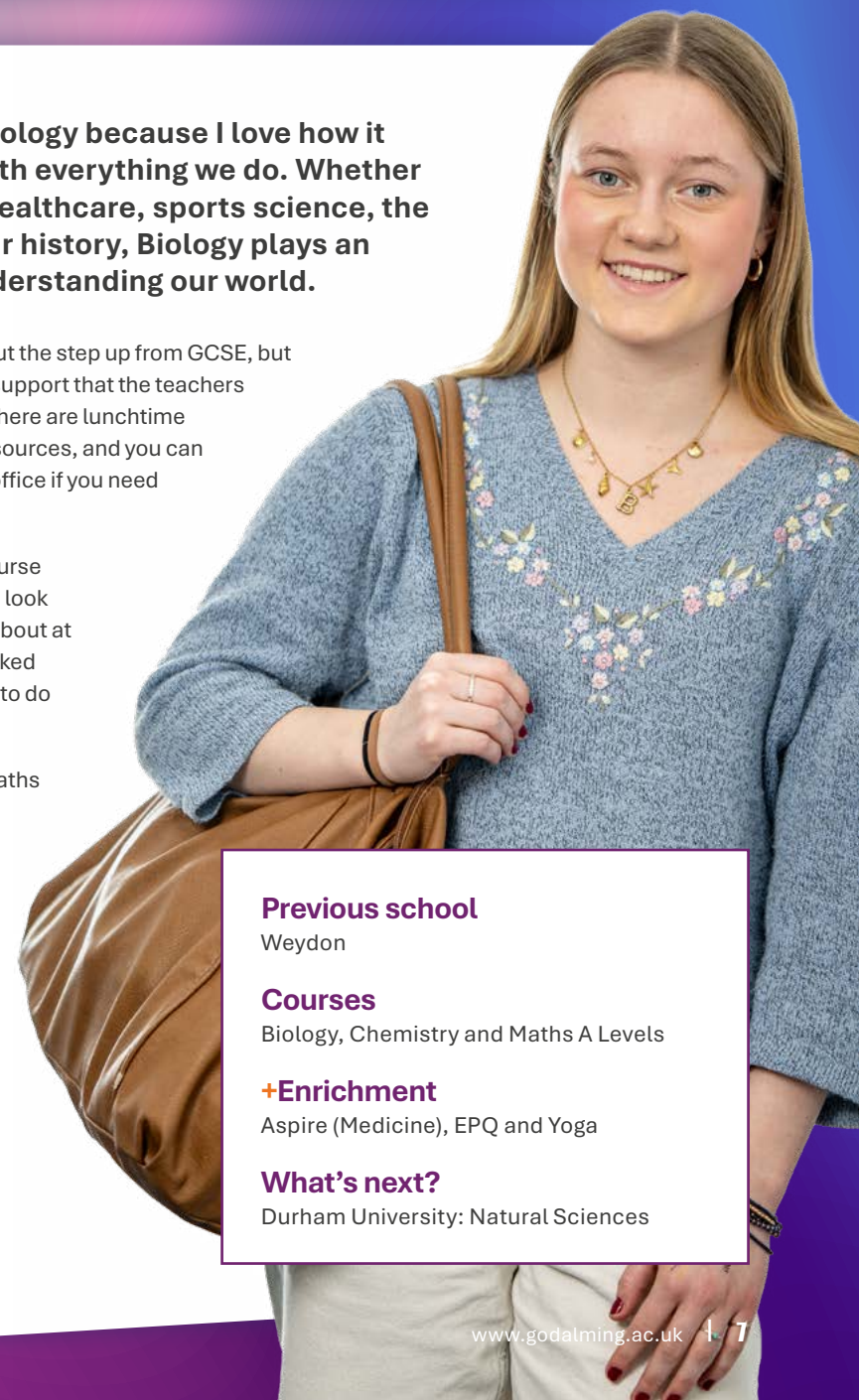
I chose to study Biology because I love how it links so closely with everything we do. Whether that's medicine, healthcare, sports science, the environment or our history, Biology plays an integral role in understanding our world.

Initially, I was worried about the step up from GCSE, but it is manageable with the support that the teachers and the College provide. There are lunchtime sessions, lots of online resources, and you can just drop into the Biology office if you need help with anything.

My favourite part of the course has been genetics, which I look forward to learning more about at university. My EPQ also linked to genetics, and it was fun to do some research of my own.

I have found that A level Maths has helped me with the calculations in Biology, and some of the Biology content has appeared in Chemistry too.

My next step is to study Natural Sciences at University. I imagine this could lead me down a path of healthcare or research, or even both. Biology is an incredibly useful and exciting subject.



Previous school

Weydon

Courses

Biology, Chemistry and Maths A Levels

+Enrichment

Aspire (Medicine), EPQ and Yoga

What's next?

Durham University: Natural Sciences



CHOOSING YOUR STUDY PROGRAMME

To help you choose your Study Programme, use the more detailed course information on our website.

We also strongly recommend you visit us for an Open Evening to gather as much information as possible about the courses on offer, to talk to staff and students and to find out about College life. You will have plenty of opportunities to discuss your choice of Study Programme with our staff at a Course Advice Session (CAS), at your Going to Godalming (G2G) taster day and finally at Enrolment.

SCAN FOR
COURSE INFO



When choosing your courses it is helpful to ask yourself these questions:

- What subjects am I good at?
- What subjects might I enjoy?
- Do I need to study a particular subject to ensure I can progress into a specific career?
- Have I considered new subjects I haven't studied before?

YOUR STUDY PROGRAMME

SCAN FOR
AN EXAMPLE
TIMETABLE



As well as your core courses, you will have a Personal Tutor who will look after you and monitor your progress. In addition, you will be expected to take part in our **+Enrichment Programme**.

Examples of Study Programmes

Lower 6th	A Level Ancient History	A Level English Literature	A Level Economics	Tutorial	+Explore Debating +Active Netball
Upper 6th					Extended Project Qualification (EPQ)
Lower 6th	A Level Physics	A Level Computer Science	BTEC Information Technology AAQ	Tutorial	+Explore AI Automation and Robotics
Upper 6th					Core Maths
Lower 6th	BTEC Diploma Creative Digital Media (Film & Television)	BTEC Digital Music Production		Tutorial	+Active Jazz Band
Upper 6th					Study Skills and Employability Workshops

COURSES

Specific Entry Requirements

To study an Advanced Study Programme (Level 3) a minimum of 5 GCSEs at Grade 4 or above are required plus any subject specific entry requirements, which are listed below.

A-Level

Subject	English Language	Maths	Science	Other
Art	-	-	-	Grade 4 or above in an Art based GCSE is preferable.
Biology	-	6	6,6	Grade 6 or above in GCSE Biology plus another science at Grade 6 if separate sciences have been studied.
Business	4	5	-	-
Chemistry	-	6	6,6	Grade 6 or above in GCSE Chemistry plus another science at Grade 6 if separate sciences have been studied.
Computer Science	4	6	-	It is recommended that A Level Maths is taken alongside.
Design: Graphic Design & Communication	-	-	-	Grade 4 or above in an Art based GCSE is preferable.
Design: 3D Design	-	-	-	Grade 4 or above in an Art based GCSE is preferable.
Drama & Theatre	4	-	-	Grade 4 or above in GCSE Drama if studied or performance/production experience.
Economics	4	5	-	-
English Language & Linguistics	5	-	-	Grade 6 or above in GCSE English Language is preferable.
English Language & Literature	5	-	-	Grade 6 or above in GCSE English Language is preferable.
English Literature	-	-	-	Grade 5 in GCSE English Literature is required, a Grade 6 is preferable.
Environmental Science	5	5	5,5	Grade 5 or above in two GCSE Sciences (double award or two separate Sciences).
Film Studies	4	-	-	Grade 4 in English Language GCSE or Film Studies or Media Studies.
French	-	-	-	Grade 6 or above in GCSE French or equivalent qualification.
Geography	4	4	4	Grade 4 or above in GCSE Geography if studied.

Subject	English Language	Maths	Science	Other
History: Ancient	4	-	-	Grade 4 or above in GCSE History if studied.
History: Democracy & Dictatorships	4	-	-	Grade 4 or above in GCSE History if studied.
History: Revolutions & Rebellion	4	-	-	Grade 4 or above in GCSE History if studied.
History of Art	4	-	-	Grade 4 or above in a GCSE Humanities subject.
Law	4	4	-	-
Maths	-	6	6,6	Grade 7 or above in GCSE Maths is preferable. If you have Grade 6 in GCSE Maths you will also need two Grade 6 Science GCSEs.
Maths and Further Maths	-	7	-	Grade 8 or 9 in GCSE Maths is preferable. Further Maths is taken as a fourth A Level, alongside three other A Levels, one of which must be A Level Maths.
Media	4	-	-	Grade 4 or above in GCSE Media Studies if studied.
Music	4	4	-	Grade 5 level Music Theory is essential and the ability to play an instrument/sing to Grade 6 performance standard.
Music Technology	4	4	-	Grade 3 or above in instrumental/vocal ability. A confident ability to read musical notation as well as basic keyboard skills essential.
Philosophy	5	4	-	Grade 5 or above in GCSE Maths is preferable.
Photography	-	-	-	Grade 4 or above in an Art based GCSE is preferable.
Physical Education	4	-	5,5	Grade 5 or above in two GCSE Sciences (double award or two separate Sciences). Competitive level in at least one sport. Grade 4 or above in GCSE PE if studied (beneficial).
Physics	-	6	6,6	Grade 6 or above in GCSE Physics plus another science at Grade 6 if separate sciences have been studied. It is highly recommended that A Level Maths is studied alongside.
Politics	4	-	-	-
Psychology	4	4	5,5	Grade 5 or above in Biology plus another science at Grade 5. A Grade 5 in Maths is beneficial given the statistical content, but not essential.
Sociology	4	-	-	Grade 4 or above in English Literature and at least one Humanities subject.
Spanish	-	-	-	Grade 6 or above in GCSE Spanish or equivalent qualification.
Textiles	-	-	-	Grade 4 or above in an Arts GCSE is preferable but not essential.

BTEC Extended Certificate (Equivalent to one A Level)

Subject	English Language	Maths	Science	Other
Applied Science	4	4	4	
Business	4	5	-	
Dance	4	-	-	GCSE Dance or equivalent contemporary dance experience/physical skills. A passion for Dance and performance is important.
Health and Social Care	4	4	4	
Information Technology	4	4	-	
Music Technology: Digital Music Production	4	-	-	Students must be proficient in at least one instrument or vocals.
Performing Arts	4	-	-	Grade 4 or above in GCSE Drama, Dance or Performing Arts related subject or performance experience.
Sport Coaching	4	-	-	
Travel and Tourism	4	-	-	

BTEC Diploma (Equivalent to two A Levels)

Subject	English Language	Maths	Science	Other
Business	4	4	-	
Information & Communication Technology	4	4	-	
Media: Creative Digital Media Production	4	-	-	Grade 4 GCSE in Media Studies or Merit in BTEC Level 2 First Diploma in Media if studied.
Performing Arts	4	-	-	Grade 4 or above in GCSE Drama, Dance or Performing Arts related subject or performance experience.
Travel and Tourism	4	-	-	Grade 4 English Language or at least a Merit in Level 2 BTEC in Travel and Tourism if taken.

BTEC Extended Diploma (Equivalent to three A Levels)

Subject	English Language	Maths	Science	Other
Sport: Coaching and Development	4	-	4	Grade 4 or above in GCSE PE if studied (beneficial).

GCSE

Subjects
English
Maths

A full description of the courses and their content can be found at:
www.godalming.ac.uk/courses

SCAN FOR COURSE INFO





+ENRICHMENT

When you join the College, you will not only benefit from a first-class academic education, you will also be joining a vibrant learning community where your engagement and personal enrichment is a key focus.

We are delighted to be able to offer a wide range of additional options to develop and support you alongside your core academic or vocational subjects. Whether you want to try your hand at a new skill, play sport or music, get involved with exploring areas beyond the core curriculum subjects or strengthen your life skills of resilience, budgeting, time management or leadership, we have something for everyone. These additional options enable you to gain confidence and broaden your experiences to support your next step, whatever that may be. Our **+Enrichment Programme** has three pathways: **+Explore**, **+Active** and **+Qualifications**.

- The **+Explore** pathway is available to Lower Sixth students and provides you with a range of short courses to choose from. Students will typically study one or two of these.
- The **+Active** pathway includes sport, music, drama, Duke of Edinburgh, and eSports, which will run throughout your time at College.
- The **+Qualification** pathway offers accredited courses such as Arts Award Gold, EPQ, Core Maths, AS Further Maths and Music Practitioners. Arts Award is available to both Lower and Upper Sixth students, whereas all others are available only in the Upper Sixth.

**SCAN FOR
MORE DETAILS**



In your second year, the **+Enrichment Programme** provides you with an opportunity to continue with **+Active**, or instead take an additional qualification to support your application to competitive destinations. For example, the Extended Project Qualification (EPQ), Core Maths or the Arts Award Gold. Alternatively, students can complete a Study Skills and Employability course to help with future job applications as well as to further develop valuable study skills such as organisation and revision.

In addition, we have plenty of student-led activities and societies for you to join. In short, we are confident we have something for everyone.

Our +Enrichment Programme helps Godalming College students stand out from the rest when making applications for university, jobs and apprenticeships.

The following pages will give you a flavour of our extensive range of options:

- +Explore**
- +Active**
- +Qualification**





+EXPLORE

Our range of short courses provide you with the knowledge and experience to develop your future plans beyond College, without additional coursework or exams.

The list below is an example of the options available. Please note that this range of courses varies each year and will run subject to demand.

- + AI Automation and Robotics
- + Animation and Games Development
- + Architecture of the World
- + Arts for All
- + Chess Club
- + Climate Change Emergency
- + Debating
- + Dissection Club
- + Drama and Dance School Auditions
- + First Aid
- + Five-a-Side Football
- + Forensics
- + German for Beginners
- + History of American Cinema
- + History of Warfare
- + Human Rights
- + Introduction to Nursing
- + Introduction to Engineering
- + Introduction to Photoshop
- + Investment Society
- + Journalism
- + Law Next?
- + Magazine Production
- + Marine Biology
- + Photography Basics
- + Practical Podcasting
- + Run 5K
- + Spanish for Beginners
- + Teaching English as a Foreign Language (TEFL)
- + The Big Question
- + Understanding Addiction
- + Yoga



STUDENT FOCUS

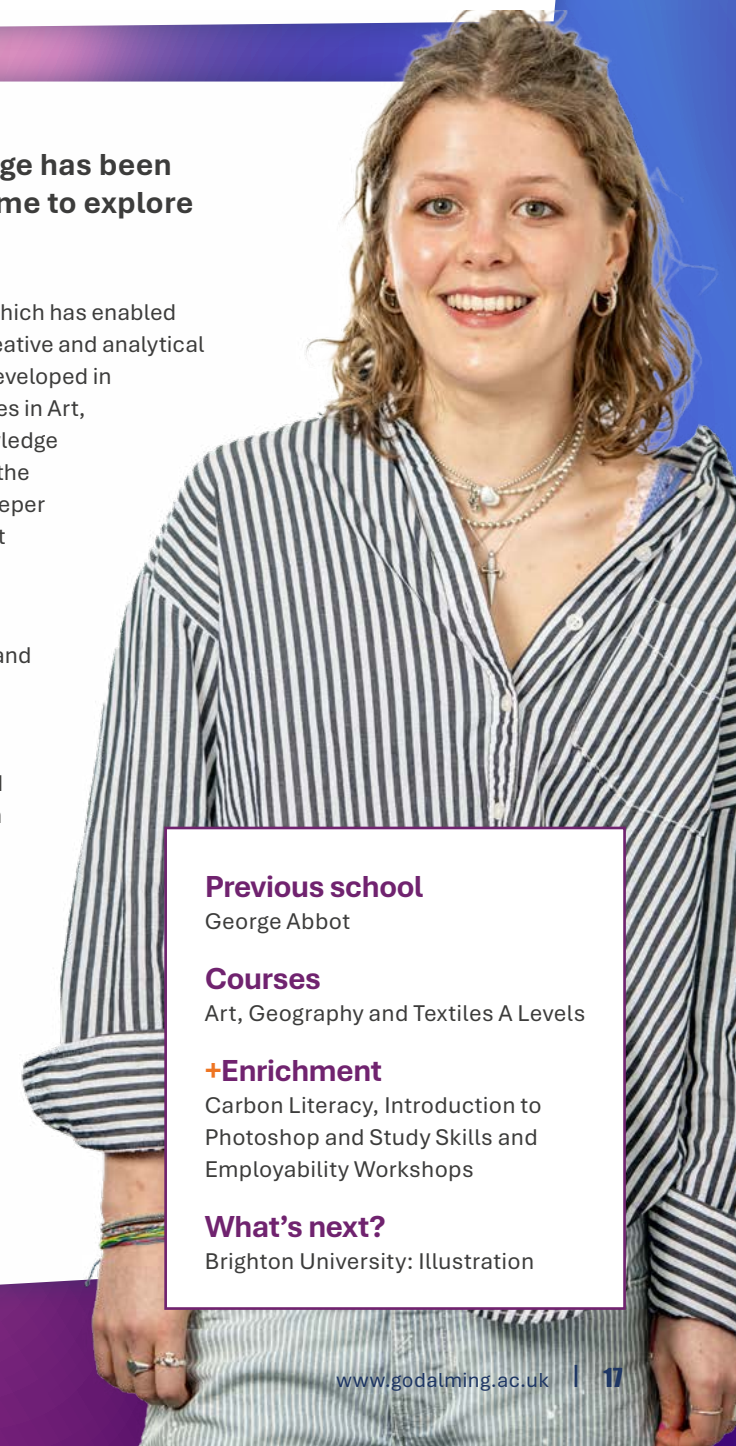
CLARA DUNLEAVY

Attending Godalming College has been a fantastic opportunity for me to explore my passion for Textiles.

I've also studied Art and Geography, which has enabled me to approach design from both a creative and analytical perspective. The practical skills I've developed in Textiles have complemented my studies in Art, where I've been able to apply my knowledge of pattern and texture. Geography, on the other hand, has provided me with a deeper understanding of how the environment influences design.

Throughout the course, I've enjoyed experimenting with various materials and techniques, particularly printmaking and fabric manipulation. One of my favourite projects focused on the theme of endangered oceans, inspired by climate change advocacy. Freedom to experiment in the College studio has been invaluable in bringing my ideas to life.

After completing my studies at Godalming, I plan to pursue Illustration at Brighton University. I'm excited to continue developing my artistic abilities and look forward to combining my passions within the arts as I explore new possibilities in the creative industry.



Previous school

George Abbot

Courses

Art, Geography and Textiles A Levels

+Enrichment

Carbon Literacy, Introduction to Photoshop and Study Skills and Employability Workshops

What's next?

Brighton University: Illustration



+ACTIVE SPORTS

Godalming College has some of the best sports facilities in the area. We have high specification netball/tennis courts, international standard rugby and football pitches, plus a county size, fully equipped Sports Hall. We have a fantastic reputation for competitive sport and offer a full programme of team sports. We also believe that sport should be for all and therefore we offer opportunities for all students who want to remain fit and healthy.

Competitive Sports

- + Men's Football (Five Teams)
- + Women's Football (Two Teams)
- + Men's Rugby (Two Teams)
- + Women's Rugby
- + Netball (Four Teams)
- + Men's Basketball
- + Mixed Hockey
- + Men's Hockey
- + Women's Hockey
- + Mixed Badminton
- + Mixed Cricket

Other Opportunities

- + Fully equipped gym
- + Women's Basketball
- + Badminton
- + Trampolining
- + Tennis
- + Volleyball
- + Athletics
- + Golf



STUDENT FOCUS

SAM MAHARAJ

Ancient History has been a passion of mine for many years, and I never imagined I would find a college that offers such a dedicated course until I visited Godalming.

The staff at Godalming College are exceptional, using a variety of activities to make every lesson both stimulating and informative, while also ensuring that students are well-prepared for their A Level exams.

The course covers some fascinating topics, from the Julio-Claudian Dynasty in Rome to Athenian tragedies such as "Hippolytus" by Euripides. These are structured to make revision straightforward and effective. In addition, the department offers an array of engaging online resources.

If you have a passion for the ancient world, I highly recommend this course. It is an incredible opportunity to explore History in depth while receiving excellent preparation for future studies.

Previous school

Box Hill

Courses

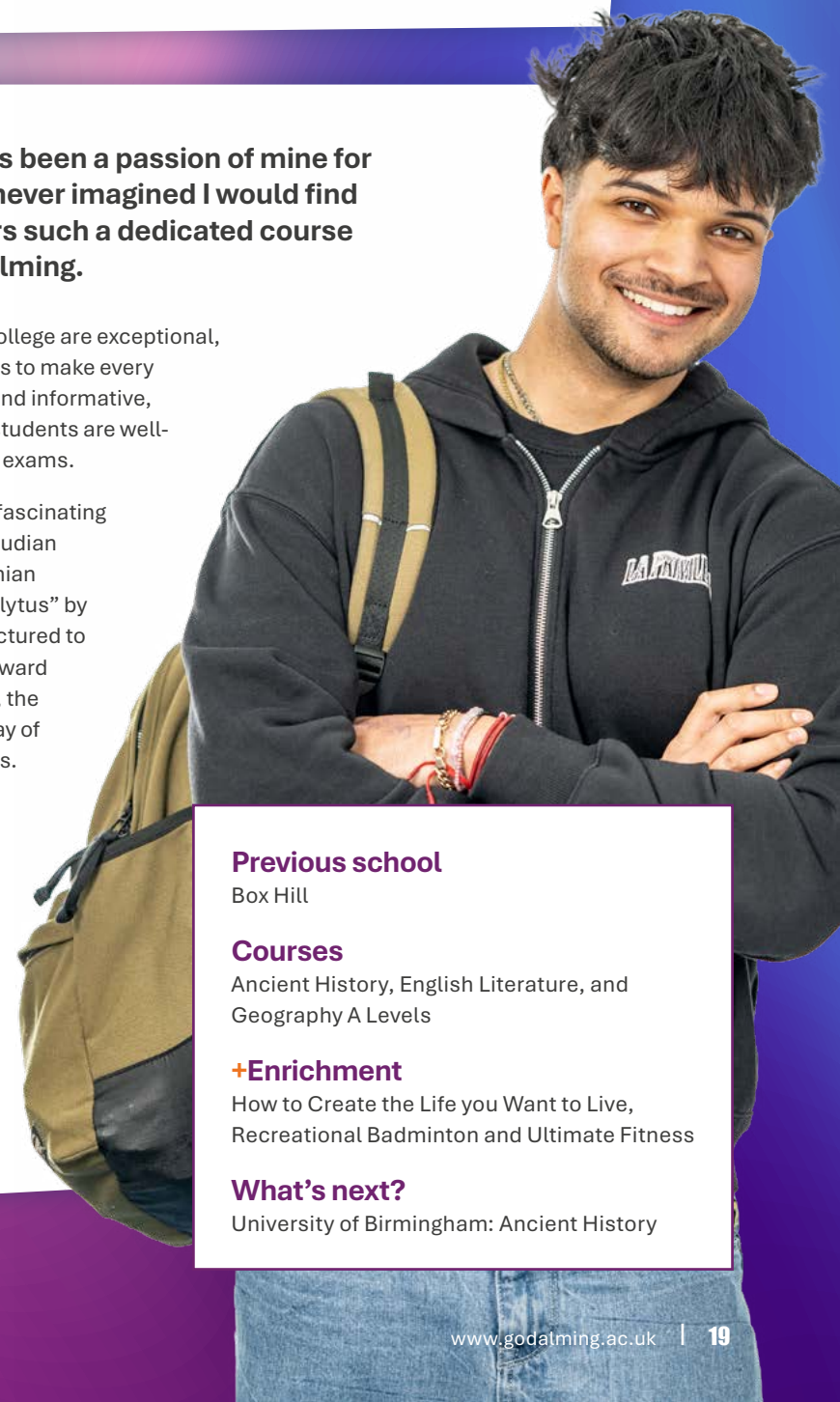
Ancient History, English Literature, and Geography A Levels

+Enrichment

How to Create the Life you Want to Live, Recreational Badminton and Ultimate Fitness

What's next?

University of Birmingham: Ancient History





The Arts are an integral part of the College community, with many students coming together to celebrate their talent regardless of whether they study an Arts subject or not. The College has been awarded the Platinum Artsmark by the Arts Council which recognises the outstanding Arts provision at Godalming College. This provision includes state-of-the-

art resources, specialist teaching, links with industry and community organisations and recognises our commitment to developing the Arts. Godalming College is one of only a handful of sixth form centres in the country to have achieved this accolade. We also promote best practice by running keynote speaker and CPD sessions for teachers in other colleges.

The Arts are an integral part of the College community



Drama and Dance

ClassAction is the performance company at Godalming College and is a centre for excellence in Performing Arts. We offer a unique training environment that is inspiring, nurturing and supportive. Together with training from our own teaching staff, you are regularly invited to work alongside industry professionals to ensure the training you receive is the best it can be, preparing you for success and training you for progression.

The department won the national education award 'Outstanding School Drama Department' in 2024, which is testament to the outstanding work they do. The award is based on nominations from former students, which makes it even more special to receive.

Music

The Music department is vibrant and productive at Godalming College, with many performing opportunities throughout the year as part of the Concert Orchestra, String Ensemble Choir, Jazz Band, Funk Band or one of our many other ensembles. We regularly take trips to London to see professional musicians/orchestras perform and welcome all students with a passion for any kind of music. The Music department has received the Music Mark in recognition of its excellent student experience and progression.



ABBY TSE

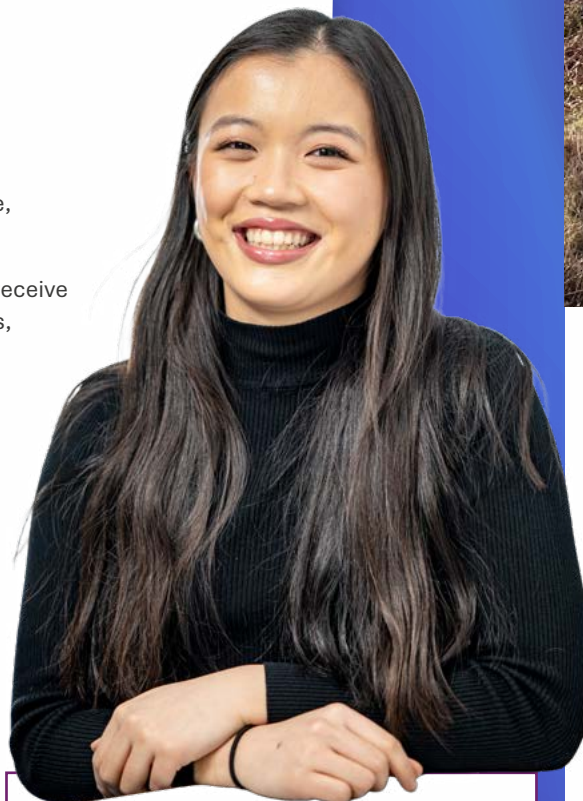
As someone who enjoys the balance of creativity expressed through artwork that is visually pleasing...

... as well as conveying a deeper meaning and purpose, I knew Graphic Design was the course for me.

Although it is a time and effort intensive course, we all receive outstanding support from our teachers and technicians, who teach us the ins-and-outs, from using software to physical techniques. Much like other coursework subjects, it is a course that requires a consistent, strong effort. The most rewarding part for me is seeing my skills improve as my work develops, and being able to execute tasks with increasing efficiency and attention to detail.

The self-discipline I've learned in my Graphic Design course has shaped my work ethic in Maths and English Literature, as well as outside of College. Having creative coursework paired with literature and logic has allowed me to use parts of my brain that I wouldn't otherwise have a chance to use. For example, the problem solving in creating outcomes in graphics has allowed me to answer problems with greater consideration in English and Maths.

Next year, I will be going on a gap year in which I hope to travel and work, before heading to university to study Architecture, which I believe will offer a balanced mix of the subjects I take currently.



Previous school

Notre Dame

Courses

English Literature, Graphic Design & Communication and Maths A Levels

+Enrichment

Introduction to Photoshop, EPQ, Study Skills and Employability Workshops

What's next?

Studying Architecture after a gap year



+ACTIVE

Duke of Edinburgh's Award



Choosing DofE at Godalming College is an adventure from start to finish. It is about you and your friends sharing amazing experiences, having fun and shaping your futures along the way. Every section offers something different and you will have the opportunity to enjoy new experiences, challenge yourself and discover talents you never knew you had.

You will find that you grow in confidence and resilience and have much more to talk about when you apply for University or a job. You will be able to evidence the 'soft skills' you have developed through your commitment, leadership and teamwork.

The DofE journey allows you to really make a difference to other people's lives and your community. You'll get fitter, healthier, make new friends and some incredible memories that will last a lifetime.

eSports



The College eSports franchise supports students who wish to participate in competitive gaming as part of a team. The eSports event industry is growing rapidly, and the latest government figures showed it contributed more than £100 million to the UK economy. We currently enter teams into the British eSport Championships for the following games: **League of Legends, Overwatch 2, Valorant and Rocket League.** In recent years we have won Division 2 in Valorant and made Quarter Finals in Division 1 League of Legends and Overwatch 2. This year we entered nine teams across all games ranging from those who were playing competitively for the first time in a newly formed team, through to an established team hoping to make the National Final.



+QUALIFICATIONS

Students can opt to take an additional qualification to complement their core programme.

Choose from the following:

First Year

- + Arts Award Gold 2 Year Course – Level 3

Second Year

- + Arts Award Gold Accelerated 1 Year Course – Level 3
- + Core Maths – Level 3
- + Further Maths (AS)
- + Extended Project Qualification (EPQ) – Level 3
- + Music Practitioners Course – Level 3 (Rock School)



STUDENT FOCUS

LUKE SALINS

I chose to study film as I have long aspired to work within the industry, and it was not an option available to me at GCSE.

The Film Studies A Level reflects on eleven films, all suited to cover form, attitudes, audience interpretation and relevance to social or economic contexts across different time periods. Students compare the evolution of film, which gets you thinking critically about movies in general.

During your first year, you will have the opportunity to do some practical work. Making a short film or writing a screenplay will count towards your final grade. It's a great opportunity, and you are supported with using the College equipment.

Most lessons are interactive and there are workshop opportunities to support your understanding. This is a course that will allow you to flourish in terms of critical thinking, teamwork, expressing your ideas and improving your writing. It's a perfect route into a Film Studies degree or studio apprenticeship.



Previous school

St Peter's

Courses

English Literature, Film Studies and Philosophy A Levels

+Enrichment

Debating, EPQ and Study Skills and Employability Workshops

What's next?

University of Exeter: Film Studies

STUDENT-LED CLUBS AND SOCIETIES

In addition to **+Enrichment**, the College also encourages students to create their own clubs and societies to meet new people and pursue their interests.

If you have something in mind, our Student Union and the Events Coordinator at College will help to create and support a club or society which promotes your interests and aspirations.

- Art Club
- Book Club
- Chess Club
- Christian Union
- Debating Club
- Equality Group
- Games Club
- Intersectional Feminist Society
- Journalism Club
- Knitting and Crochet
- LGBTQ+
- Med, Vet and Dentistry Society
- Philosophy Club
- Unity Club
- Tabletop Society (Warhammer)
- Plus more

True Adventure

Each year an intrepid group of student volunteers join an expedition to a developing country to learn more about the culture and community. They work on a community project which often involves building, decorating and refurbishment to provide amenities for local people.

Previous destinations have included Borneo and Zambia; with Peru, Ecuador and Galapagos booked for forthcoming adventures.



TA

STUDENT FOCUS

ELLA MEIER

The teaching staff guide us through in a way which makes the classroom a fun and welcoming space.

Studying Spanish and French at A Level has been challenging at times, as the language we encounter is more complex and the teaching is at a much higher level than GCSE. It has been an eye-opening experience! However, the teaching staff guide us through in a way which makes the classroom a fun and welcoming space.

It was a big decision to choose to study two languages, as they are both demanding subjects; however, I have no regrets as they complement one another really well. The skills are transferrable and the exams are the exact same format.

Next year, I hope to continue studying Modern Foreign Languages at university.

Previous school

Bohunt

Courses

Chemistry, French and Spanish A Levels

+Enrichment

Aspire Literature, Language and Humanities

What's next?

Modern Foreign Languages degree at university



SUPPORT FOR LEARNING

Your Personal Tutor will be your first port of call if you have any problems.



Personal Tutors and Support Officers

When enrolled at Godalming College you are allocated a Personal Tutor. Their priority is to ensure that you settle into College. They will support your academic progress and wellbeing. Your Personal Tutor will be your first port of call if you have any problems and will encourage you to take responsibility for your learning. You will have weekly meetings with your Tutor in a group setting and regular one-to-one reviews. They will also guide you through your options after College and help you make those big decisions about your future, assisting you in applications to university, apprenticeships and employment. Personal Tutors may request further guidance from Support Officers, who are a dedicated team on hand to provide supportive intervention and keep students engaged and on track.

**HEAR HOW
WE SUPPORT
LEARNING**



Senior Tutors

Our highly experienced Senior Tutor team are also trained safeguarding leads who work with students on their academic progress, wellbeing, and complex issues. The Senior Tutors know that welfare is key to academic progress and are committed to working with you to help you meet your potential. Senior Tutors have an open-door policy; you can either drop in or book an appointment with them via Student Services. They, alongside the Support Officers and your Personal Tutor, will offer safe and non-judgemental advice and help signpost you to external forms of support where necessary.

Shaping Futures

Shaping Futures is our tutorial programme, which is designed to build your life and study skills, as well as help you with planning for your next steps beyond Godalming. We explore issues such as keeping safe, career development, environmental initiatives, Learner Voice, drugs and alcohol education, sex and relationships education, wellbeing and money management. There are additional sessions in the first term to help you settle into College.

Financial Help

The College may be able to offer financial assistance to students in certain circumstances, to help with some of the direct costs of study and purchasing books and essential equipment. You can contact our Finance Team to check if you might qualify: finance@godalming.ac.uk. Further information is also available on the College website.

**SCAN FOR
MORE DETAILS**



The teachers are supportive and there are so many amazing resources, which is always really helpful and reassuring for revision and consolidation. The College itself has been welcoming, creating a positive environment.

Noku Harahwa, Upper Sixth Student 2024/25

Student Reviews

Student Reviews, which are issued to all students and their parents twice a year, give an account of progress in terms of attendance, approach to learning and performance. You will have an individual review of progress with each of your subject teachers four times across a two year A Level/BTEC programme. In addition, you will meet with your Personal Tutors several times a year for a one-to-one review. There are Parents' Evenings across the two years when parents can meet online with subject teachers to discuss academic progress.

Curriculum Support

Departments run workshops which you will be able to access if you are struggling with a particular aspect of the course or if you feel that you would welcome some extra input. Departments may also place you on a supportive Action Plan in order to set you clear goals to get back on track. If you are finding multiple subjects difficult, you may also be teamed with your Support Officer who can work with you to discuss your vision and skills.



The teachers are engaging and supportive, providing useful and constructive feedback on homework and benchmarks, which enables you to develop and progress.

Will Moorey, Upper Sixth Student 2024-25



Learning and Study Support

Learning and Study Support is available to every student, enabling learning and successful completion of courses. You will take part in an initial screening process and will complete a Learning Support questionnaire. This is to help us identify students who might benefit from extra support. Further in-depth assessment may be carried out, if necessary, to identify needs. Students are encouraged to make use of the support offered and to talk to us about any concerns they may have.

It is a big jump from GCSE to A Level and the Learning and Study Support department, located above the library, is dedicated to assisting students as they make this transition. Throughout your time at College, you may need help in areas such as organising your time, improving essay techniques or meeting coursework deadlines. You will also be developing important skills in critical thinking and evaluation. Our highly trained and experienced Learning Support Facilitators liaise with teaching staff, and design individual programmes to enable students to develop the skills required for academic success.

We offer:

Drop-in support:

Available to anyone who would like some help with their work.

1:1 sessions: Timetabled weekly lessons, long or short term.

Assessment for exam access arrangements.

Specialist help for students with a wide range of needs (ADHD, dyslexia, autism etc.)



SUPPORT FOR WELLBEING

We provide a supportive, inclusive environment and we are proactive in our approach.

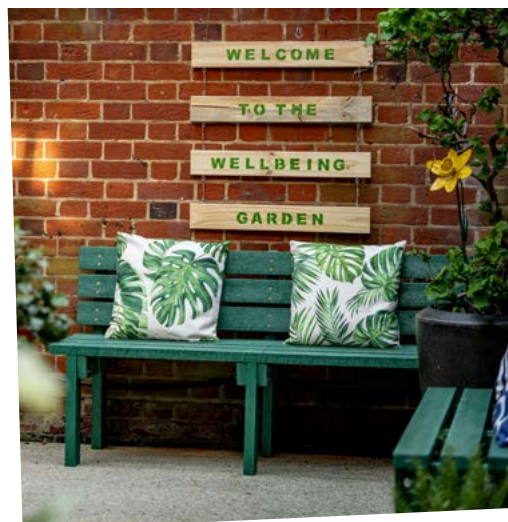
Along with Personal Tutors, Support Officers and Senior Tutors, students have access to the support of the Director of Safeguarding and Intervention, the Assistant Principal of Safeguarding and Support, the Health and Wellbeing Manager and the Student Wellbeing Practitioner.

Health and Wellbeing Manager

Our Health and Wellbeing Manager is a qualified nurse and based in the Student Services building. This means that we have a professional nurse on site every day to ensure all students' health and mental health needs are supported throughout their time at Godalming College. The Health and Wellbeing Manager works with the Student Wellbeing Practitioner to help you find the services which are most appropriate for your needs, including our mindfulness course, sexual health clinic and exam anxiety workshops. They also work closely with external services such as Mindworks/CAMHS and other service providers, to ensure that all available support is being utilised.

Wellbeing Hub and Garden

Our Wellbeing Hub and Wellbeing Garden offer tranquil spaces for students to relax, reflect and rejuvenate. The Wellbeing Hub provides access to a calm study space that students with mental and physical health barriers can use and access further support. The Garden is a peaceful retreat for any student to enjoy mindfulness and being outside. Together, they support the holistic wellbeing of our students; fostering a healthy and balanced College experience.



Wellbeing Support

We want you to settle into College and have a happy and rewarding time. To ensure that you feel supported throughout your College life, the Student Wellbeing Practitioner offers a range of support, drop in sessions and scheduled 1-2-1s. These activities include Pets as Therapy, exam stress management programmes, tea and talk groups and peer mentor support. The College also runs Safety, Wellbeing and Progression weeks to ensure students are kept informed and have opportunities to talk to external agencies. Students can access a dedicated app called Wisdom which provides a 24/7 counselling and support helpline as well as a wide range of useful resources to support their health and wellbeing.

**HEAR FROM
OUR ASSISTANT
PRINCIPAL OF
SAFEGUARDING
AND SUPPORT**



Safeguarding

Godalming College promotes the importance of student safety through our Safeguarding Policy, which highlights that safeguarding is everyone's responsibility. In Safety and Wellbeing weeks students learn about how to keep themselves safe, both now and in the future. All staff at Godalming are committed to the safeguarding of our students and will liaise with external agencies when necessary. The Safeguarding Team comprises the Assistant Principal of Safeguarding and Support, Director of Safeguarding and Intervention, Senior Tutors, Head of Learning Support, Health and Wellbeing Manager and Student Wellbeing Practitioner.

College Counselling Service

We have a Counselling Service for students located on site, run by BACP accredited counsellors. The service is available five days a week. You can simply call in or book an appointment by phone or email for this free, confidential and impartial service.

Equality, Diversity and Inclusion



The College is committed to fostering an inclusive and diverse environment. We have a dedicated Equality, Diversity and Inclusion (EDI) Officer, who ensures that our community is welcoming and supportive for everyone.

Our EDI calendar is filled with engaging events such as Culture Day, Women in Business and Pride, celebrating the rich diversity of our students and staff. These events provide opportunities for learning, connection and celebration, reinforcing our commitment to inclusivity and equality.



SUPPORT FOR PROGRESSION

Our Careers & Progression Team assists students in planning for their future.

It is a well-resourced department where students can access a wide range of online information and guidance materials through the Student Portal, Microsoft Teams and our online progression platform, Unifrog. Our professionally qualified Careers staff offer advice on preparing a CV, applying to university both at home and abroad, apprenticeships, specialist Art/Music/Drama courses, gap year opportunities, employment and training.

**A VIDEO FROM
OUR DIRECTOR
OF PROGRESSION
AND CAREERS**



As a Godalming College student you will have access to:

- **Personalised 1:1 Careers guidance interview**
- **Progression information through the Shaping Futures tutorial programme**
- **Tailored advice for university, study abroad, apprenticeship and employment applications**
- **Specialist interview preparation including audition practice**
- **Additional academic programmes including the Extended Project Qualification (EPQ)**
- **Visits from employers, universities and apprenticeship providers**
- **Entry to national competitions, Olympiads and challenges**
- **Access to a growing alumni network**

STEAM

STEAM has become a well-known acronym for academic study in Science, Technology, Engineering, Arts and Maths. We use accurate and up-to-date Labour Market Information (LMI) to identify employment trends, growth areas and skills gaps. We have invested in specialist teaching and resources to support students who wish to succeed in these areas by introducing additional academic challenges, visiting speakers, regular trips and links with universities and industry.



Our Bespoke Progression Programmes

Aspire

There is an additional programme of support for those students whose ambition is to gain a place at Oxford or Cambridge, or to apply for highly competitive courses such as Medicine, Dentistry and Veterinary Science. This is an additional timetabled commitment which includes weekly structured support to prepare fully for the demanding application process.



**LEARN MORE
ABOUT THE
ASPIRE
PROGRAMME**



Industry Insight

We have a regular lunchtime programme of visiting employers who provide students with key information about accessing their particular career sector. Previous talks have focused on law, architecture, uniformed services, engineering and healthcare to name a few. We also have strong connections with our growing alumni, who provide their perspectives on the transition from being a Godalming College student to where they are now.

Employer Engagement

Meaningful encounters with employers are a fundamental tenet of progression planning at Godalming. All students are expected to organise work experience whilst with us, supported by our dedicated Employer Engagement Coordinator. We also run events that include industry insight sessions, employer fairs, subject and skills pathway sessions and talks on apprenticeship and university choices.

STUDENT

PROGRESSION

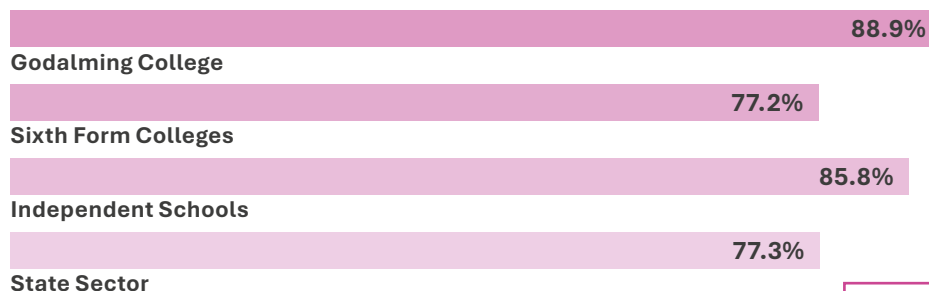


We take pride in supporting students with their applications to their chosen destination, wherever it may be.

In addition to a coordinated approach to progression in Tutor sessions, we also have dedicated Progression Days at the end of the Lower Sixth year to assist with transition into Upper Sixth and beyond. As a result, students leave Godalming with confidence and optimism about their future. We are particularly proud of the Higher Education Statistics Agency (HESA) data shown below, which demonstrates that the education and all-round experience that students have at Godalming is excellent preparation for success at degree level.

Enabling students to successfully progress after Godalming is a key priority for us.

Degree Classification 1st Class and 2:1



Source: Higher Education Statistics Agency (HESA) Graduates 2023

SCAN FOR MORE DETAILS



Most students move on to further study or work, with the vast majority progressing to higher education at their first-choice university.

Ofsted 2024



STUDENT FOCUS

EMILY OWENS

Studying Environmental Science has been really enjoyable and has allowed me to broaden my interests within a range of relevant topics.

Although I have studied two creative subjects alongside Environmental Science, I found links between them, which has allowed me to have a wider perspective on topics covered. I am planning to go to the University of Manchester in September to study an Integrated Masters in Environmental Science with a year abroad in my third year.

Transitioning from an online secondary school to college was an exciting experience and I really enjoyed the social aspects of college life. It was refreshing to engage with new people and build connections. I also feel incredibly inspired by my teachers, who have not only supported me but allowed me to realise my true passions. Godalming has been a place where I have found friends for life, been able to express myself and adapt my journey around my own character, which has made the experience even more fulfilling.

Previous school

Home tutored

Courses

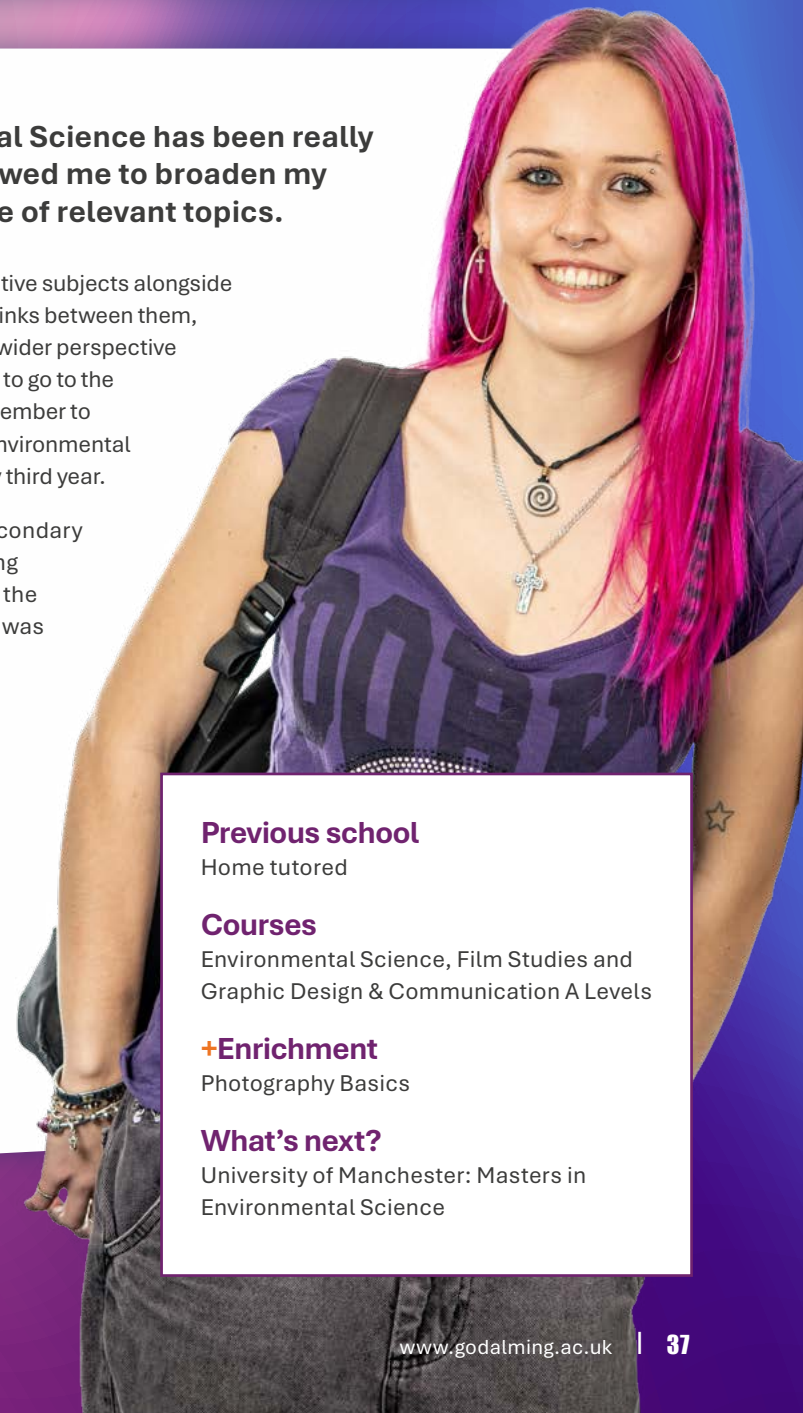
Environmental Science, Film Studies and Graphic Design & Communication A Levels

+Enrichment

Photography Basics

What's next?

University of Manchester: Masters in Environmental Science



OUTSTANDING RESOURCES

At Godalming College, we not only have fantastic teachers but we also provide a first class range of facilities and resources to support your learning.

EXCELLENT PERFORMANCE SPACES



**OUTSTANDING LIBRARY
AND LEARNING RESOURCES**



WELL EQUIPPED ART STUDIOS



**FOOD OUTLETS INCLUDE
A DELI, COSTA & STARBUCKS**



FIRST CLASS SPORTING FACILITIES



DEDICATED STUDY AREAS



WELL EQUIPPED STUDIO SPACES



EXCELLENT IT FACILITIES



DEDICATED WELLBEING SPACES



SPECIALIST LABORATORIES



ANCIENT HISTORY TRIP TO ROME



BRINGING LEARNING

TO LIFE

Trips and visits will help stimulate your interest and understanding of the subjects you are studying and broaden your education. They also provide great social and cultural experiences, enabling you to mix with staff and students in a completely different environment.



The College offers an impressive range of study trips and visits across many subject areas.



TRAVEL AND TOURISM TRIP TO BELFAST



POLITICS TRIP TO GENEVA



STUDENT FOCUS

JOEL SEAMAN

The training I have received through the Drama and Theatre A Level course, as well as the BTEC Diploma in Performing Arts has been immense, and I have enjoyed it thoroughly.

It has improved my confidence as a performer as well as my vocal and physical performance, meaning I no longer adopt a superficial 'showy' style when I perform but instead have developed an informed and mature acting style.

ClassAction, the College's performance company, has given me and so many others countless opportunities to perform, such as in American Idiot which "Rocked the Summer", and it was so much fun working with and learning from other creatives. ClassAction also presents its performers with opportunities to get involved behind the scenes as lighting and sound technicians for all of the shows, which include regular lunchtime cabarets and two big productions each year at Christmas and in the summer.

Throughout my time in College and with ClassAction, I have been able to explore so many pathways of development that have improved and enhanced my outlook on the industry as a whole. One such pathway it allowed me to explore is a directorial and management role, which I really enjoy as I have been able to direct a piece with one of my peers, which we performed one lunchtime to a public audience. The courses and enrichment as a whole have set me up for the future, allowing me to do something I absolutely love - to perform.



Previous school

Ash Manor

Courses

Drama & Theatre A Level and Performing Arts BTEC Diploma

+Enrichment

Dance and Drama School Auditions and ClassAction (Performing Arts)

What's next?

Gap year

TRAVELLING TO COLLEGE



In line with our commitment to the protection of our environment, the College encourages students to use public transport and works with local transport operators to give students more convenient access to services.

Travel Subsidies

College Bus Service

The College bus services operate from Farnham and Greatham.



Travelling by Train

There is a rail card for 16-17 year olds that provides a 50% discount off all rail travel. You will need to purchase the card via www.16-17saver.co.uk.

The College is approximately 15 minutes walking distance from Godalming train station, which is on the main Waterloo to Portsmouth line, with services operated by South Western Railway (SWR).

For details of timetables and other discounts available see www.southwesternrailway.com

TRAVEL AND COLLEGE BUS SERVICE



Travelling by Bus

Students living in Surrey can apply for a Surrey LINK bus card. This is for young people aged 20 and under who live in Surrey. It can be used on any single or return bus journey that starts and/or finishes in Surrey and allows you to get 50% off the adult fare for the journey you are taking. Visit www.surreycc.gov.uk and search for the Surrey LINK card.

Stagecoach operates a Student Rider bus service around the Guildford/ Godalming area. Tickets purchased in advance include reduced price travel across the network during term time. For online ticket sales visit www.stagecoachbus.com/regionaltickets/south/guildford-and-woking/studentrider

Parking

We have a limited amount of parking on site for which we issue parking permits to those students living more than two miles from College or with a disability or medical condition.

Disabled parking bays can be found at the main entrance to the College and the campus is fully accessible to wheelchair users.

We prioritise parking for our Upper Sixth students and therefore strongly encourage Lower Sixth students to use public transport or our College Bus Service.

We have also installed new, bigger bicycle racks this year which are located in a secure area with CCTV, and in close proximity to shower facilities, making cycling another great and sustainable option for getting to College.

Financial support is available through the Bursary Fund where applicable.

THE

APPLICATION YEAR

1. Open Evening

Visit us at an Open Evening on **9th July 2025** (Year 10) or **25th September 2025** (Year 11) to discuss options with teachers and meet current students.

2. Submit Your Application

Complete our online application form by **midday** on **Monday 20th October 2025**.

3. Application Received

We will confirm receipt of your application by email. Log into your applicant account to see your application and send messages to Admissions. Applications will be considered in line with our Admissions Policy, which is available on our website.

4. Course Advice Sessions (CAS)

Agree your provisional Study Programme by attending an online CAS when invited to do so. These will take place between **November 2025** and **March 2026**. Following your CAS you will be asked to accept any offer made by **midday** on **Monday 23rd March 2026**.

5. Going to Godalming Day (G2G)

On **3rd** and **6th July 2026**, enjoy a day at College experiencing taster lessons in the subjects you intend to study. We require students to attend a G2G Day as it gives the best possible opportunity to experience life as a Godalming student before enrolment.

6. College Enrolment

Confirm your Study Programme and become a Godalming College student at enrolment, which will take place **week commencing 24th August**. Appointments will be emailed mid-July. **Enrolment takes place in person**, with team trials and orientation the following week, so please ensure that you are available to attend from 24th August onwards.

Our team can be contacted via email: **admissions@godalming.ac.uk**

Apply online at **www.godalming.ac.uk/applying**

**SCAN FOR
MORE DETAILS**



OPEN EVENINGS



YEAR 10
WEDNESDAY 9TH JULY



YEAR 11
THURSDAY 25TH SEPTEMBER

**BOOKING
ESSENTIAL**



Submitting Your Application

Complete your online application form at **www.godalming.ac.uk**. Applications for **September 2026** should be submitted between **9th July** and **midday** on **20th October 2025**. Please ensure that you apply by the deadline as we will be unable to accept applications after this time. Where the College receives more applications than it has spaces, the oversubscription procedure will apply, as outlined in the Admissions Policy. We look forward to receiving your application.



The contents of this prospectus relate to the College year 2026/27. Whilst we make every effort to ensure that the detail is as up-to-date as it can be at the time it is printed, we reserve the right to make changes to the curriculum if necessary. Please refer to the website for the latest information.



Godalming College
Tuesley Lane, Godalming,
Surrey GU7 1RS



@godalmingcollege



@godalmingcollege



01483 423526



@godalming-college



college@godalming.ac.uk



www.godalming.ac.uk